

**2011 ESCOLA CAN MANENT A CARDEDEU**  
Teamwork with FF&FF architecture office

Location: Cardedeu. Spain.  
Category: Public building.  
Finished work.

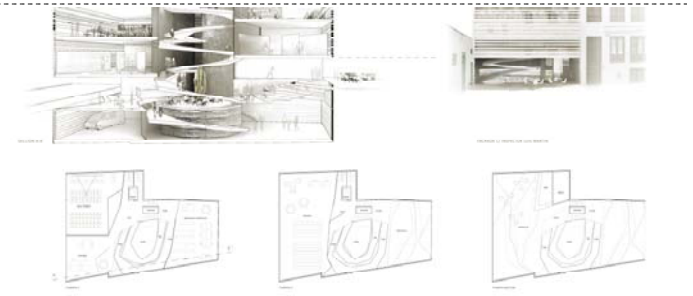


**2011 BUILDING REHABILITATION**

Location: Plaça Catalunya 2, Molins de Rei.  
Category: Rehabilitation.  
Finished work.

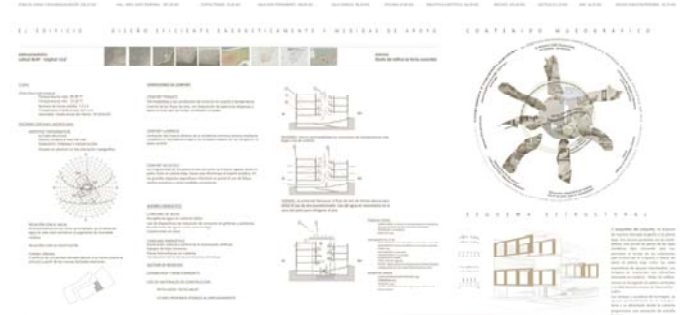
**2011 COMPETITION "SEDE DE LA RESERVA DE LA BIOESFERA" IN LANZAROTE.**  
Team with Benet Dalmau Alsina.

Location: Arrecife, Lanzarote.  
Category: Public building.  
Competition.



**2011 COMPETITION FOR A NEW PUBLIC OFFICE BUILDING "PROTECCIÓ AL MENOR I ATENCIÓ A LA FAMÍLIA" A MALLORCA**  
Team with Benet Dalmau Alsina.

Location: Palma de Mallorca.  
Category: Public building.  
Competition.



**2011 ARCHITECTONICAL AND INTERIOR DESIGN ADVICE FOR A 15 APARTMENT BUILDING IN MAÓ, MENORCA**

Location: Maó, Menorca.  
Category: Building.  
Finished work.



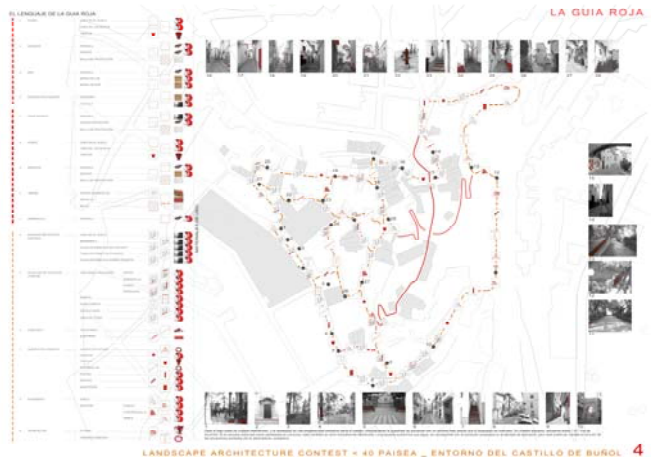
**2011 COMPETITION, PUBLIC APARTMENTS BUILDING FOR RENT WITH PARKING AND LUMBER ROOMS IN SANT JOAN DESPÍ**  
Team with Benet Dalmau Alsina.

Location: Sant Joan Despí.  
Category: Public building.  
Competition.



**2011 LANDSCAPE ARCHITECTURE CONTEST:<40 PAISEA. SURROUNDINGS OF THE BUÑOL CASTEL**

Location: Buñol.  
Category: Public building.  
Competition.

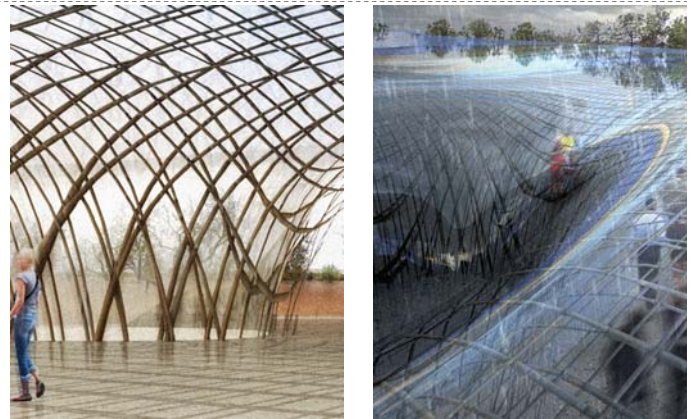


**2011 APARTMENT REFURBISHMENT**

Location: Carrer Roger16, Barcelona.  
Category: Refurbishment.  
Finished work.

**2011 PUBLIC IDEAS COMPETITION TO DESIGN THE URBAN PARK IN EIVISSA "CAN ESCANDELL".**  
Team with Benet Dalmau Alsina.

Location: Eivissa, Ibiza.  
Category: Town planning and landscape.  
Competition.



**2011 OPENGAP m\_ART COMPETITION MARKET "DE ARTES Y OFICIOS"**  
Team with Benet Dalmau Alsina.

Location: Polyvalent.  
Category: Temporary constructions.  
Competition.

**2010 COMPETITION : IIDA AWARDS 2010**  
Team with Benet Dalmau Alsina.

Location: Incheon. Korea.  
Category: Building-Public facilities.  
Second prize\_ under production.



**2010 URBANIZATION "ILLA TERCER CORREDOR" AT FALSET**  
Teamwork with GAT S.L.

Location: Falset.Tarragona. Spain.  
Category: Town planning and urbanization.  
Phase : Blueprint.

**2010 SEOUL CYCLE DESIGN COMPETITION 2010**  
Team with Benet Dalmau Alsina.

Location: Seoul.  
Category: Building-Public facilities.  
Special prize.



**2010 BLUEPRINT AND CONSTRUCTIVE PROJECT OFF THE NEW MARIN ZOO IN BARCELONA**  
Teamwork with Barcelona Regional, Barcelona Agency for metropolitan urban and infrastructure development

Location: Av. Litoral, Barcelona.  
Category: Building and urbanization.  
Phase: Constructive project.



**2010 APARTMENT REFURBISHMENT**

Location: Plaça Llibertat,2 Barcelona.  
Category: Refurbishment.  
Finished work.



**2010 THE HEATHROW CONTEST**  
Team with Benet Dalmau Alsina.

Location London.  
Category: Building-Public facilities.



**2010 PROVISIONAL MARKET MIGNON, IN BADALONA**  
Teamwork with GAT S.L.

Location: Badalona.  
Category: Building-Public facilities.  
Phase: Under construction.

**2010 COMPETITION FOR THE DESIGN AND CONSTRUCTION OF A PUBLIC PRIMARY AND HIGH SCHOOL, NEIGHBOURHOOD CENTRE AND UNDERGROUND PARKING AT "LA RAMBLA DEL POBLENOU", BARCELONA**  
Teamwork with FF&FF architecture office

Location: Barcelona.  
Category: Public building.



**2010 ARCHITECTONICAL AND INTERIOR DESIGN ADVISE FOR A DETACHED HOUSE IN CADAQUÉS**

Location: Passatge Caials. Cadaqués.  
Category: Building.  
Finished work.

**2010 APARTMENT REFURBISHMENT**

Location: Av. Paral·lel,127bis 4rt4a Barcelona.  
Category: Refurbishment.  
Finished work.

**2010 DESIGN AND CONSTRUCTION PROJECT AND MANAGEMENT OF THE INFANTILE AND PRIMARY SCHOOL CAN MANENT IN CARDEDEU**  
Teamwork with FF&FF architecture office

Location: Cardedeu, Barcelona.  
Category: Public building.  
Phase: Under construction.



**2010 REFURBISHMENT OF A 9 APARTMENTS BUILDING AT CARRER PROVENÇA, 232 BARCELONA.**  
Teamwork with GAT S.L.

Location: c/ Provença 232,Barcelona.  
Category: Refurbishment.  
Phase: Under construction.

**2009 REFURBISHMENT OF THE RESTAURANT "LA GRITTA, BCN".**

Location: c/ Numància, CC Illa Diagonal.  
Category: Refurbishment.  
Finished work.



**2009 MARKET AND POLYVALENT ROOM DESIGN AT ALCANAR**  
Teamwork with GAT S.L.

Location: Alcanar, Tarragona.  
Category: Public building.  
Phase: Negotiating process.

**2009 APARTMENT REFURBISHMENT**

Location: c/ Beat Almató, Barcelona.  
Category: Refurbishment.  
Finished work.

**2009 16 YOUNG RENT APARTMENTS BUILDING, AND PARKING**  
Teamwork with GAT S.L.

Location: Esplugues de Llobregat, Barcelona.  
Category: Building.  
Finished work.



**2009 SPORTS CENTER IN SANT FOST DE CAMPSENTELLES**  
Teamwork with GAT S.L.

Location: Sant Fost de Campsentelles.  
Category: Public building.  
Construction stopped.

**2009 BUILDING REHABILITATION**

Location: c/Padilla 237.  
Category: Rehabilitation.  
Finished work.

**2009 MAS DURAN , DESIGN FOR COVERING THE TERRACE OVER THE STUD.**

Location: Mas Duran, Cadaqués.  
Category: Edification.  
Phase: Preliminary design.

**2009 20 YOUNG RENT APARTMENTS BUILDING, AND PARKING**  
Teamwork with GAT S.L.

Location: Esplugues de Llobregat, Barcelona.  
Category: Building.  
Finished work.

**2009 COMPETITION : THINK OUTSIDE THE PARKING BOX.**  
Team with Benet Dalmau Alsina.

Category: Public building.  
Special prize.



**2009 RIVER ANIMALS ENCLOSURE**  
Teamwork with Connecta R.B.P.

Location: Marineland Palafoxs.  
Category: Public building.  
Phase: Preliminary design.



**2009 ENLARGEMENT OF THE "CAVES AGUSTÍ TORELLÓ"**

Teamwork with Connecta R.B.P.

Location: Sant Sadurní d'Anoia.  
Category: Refurbishment-building.  
Finished work.



**2009 28 APARTMENTS BUILDING, STORES AND PARKING**

Teamwork with GAT S.L.

Location: Falset, Tarragona.  
Category: Building  
Phase: Preliminary design.



**2009 28 YOUNG RENT APARTMENTS BUILDING, AND PARKING**

Teamwork with GAT S.L.

Location: Esplugues de Llobregat, Barcelona.  
Category: Building.  
Finished work.



**2009 NEW DRESSING ROOMS FOR THE FOOTBALL AND GYMNASIUM CENTRE AT MOLINS DE REI**

Teamwork with GAT S.L.

Location: Molins de Rei, Barcelona.  
Category: Public building.  
Phase: Preliminary design.



**2009 70 APARTMENTS BUILDING, PARKING, STORES, AND MARKET AT THE AVINGUDA DE CORNELLÀ-RAMBLA DEL CARME**

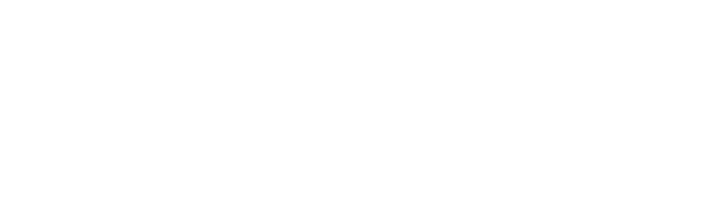
Teamwork with GAT S.L.

Location: Esplugues de Llobregat, Barcelona  
Category: Building and public building.  
Phase: Final design.

**2009 COMPETITION FOR THE DESIGN OF A HIGH SCHOOL AT LLORET DE MAR**

Teamwork with FF&FF ARCHITECTURE OFFICE

Location: Lloret de Mar, Girona.  
Category: Public building.



**2009 SURROUNDINGS URBANIZATION OF THE BUILDING LOCATED AT CARRER JULI GARRETA 1-3 CORNER WITH CARRER ISIDRE MARTÍ**

Teamwork with GAT S.L.

Location: Esplugues de Llobregat, Barcelona.  
Category: Urbanization.  
Finished work.

**2009 COMPETITION FOR THE DESIGN OF AN INFANTILE AND PRIMARY SCHOOL AT MAÇANET DE LA SELVA**

Teamwork with FF&FF architecture office

Location: Maçanet de la Selva, Girona.  
Category: Public building.



**2009 COMPETITION FOR THE DESIGN OF A INFANTILE AND PRIMARY SCHOOL AT MANRESA**

Teamwork with FF&FF architecture office

Location: Manresa, Barcelona.  
Category: Public building.

**2009 EUROPEAN COMPETITION 2009**  
Teamwork with Benet Dalmau Alsina, designer  
and Carolina Laurenço, architect.

Location: Dessau, Germany.  
Category: Town planning and building.



**2009 COMPETITION FOR THE RECYCLING DESIGN. CARPET COLOURS IN THE SKY**

Category: Industrial design.

**2009 COMPETITION FOR THE NEW FIRE STATION AT LA ROCA DEL VALLÈS**  
Teamwork with FF&FF architecture office

Location: La Roca del Vallès, Barcelona.  
Category: Public building.

**2009 BUILDING 18C OF 76 SOCIAL APARTMENTS AT SECTOR TURÓ DEL SASTRE. MONTGAT**  
Teamwork with FF&FF architecture office

Location: Montgat, Barcelona.  
Category: Building.  
Phase: Preliminary design.



**2009 COMPETITION ELIZONDO SQUARE**

Location: Elizondo.  
Category: Town planning and urbanism.

**2009 COMPETITION WOOD FURNITURE**

Category: Industrial design.

**2009 COMPETITION FOR THE CENTRAL SQUARE IN BADALONA**  
Teamwork with FF&FF architecture office,  
C.Llop, S. Jornet and E. Pastor architects

Location: Badalona. Barcelona.  
Category: Town planning and urbanism.  
Phase: Final design.



**2008 COMPETITION FOR THE DESIGN OF A INFANTILE AND PRIMARY SCHOOL VILANOVA I LA GELTRÚ**  
Teamwork with GAT S.L

Location: Vilanova i la Geltrú, Barcelona.  
Category: Public building.

**2008 DESIGN OF 2, 90 YOUNG RENT APARTMENTS BUILDINGS, STORES AND PARKING AT BADALONA**  
Teamwork with GAT S.L

Location: Badalona, Barcelona.  
Category: House and trade building.

**2008 DESIGN OF A 18 YOUNG RENT APARTMENTS BUILDING, PARKING AND STORES AT VILANOVA I LA GELTRÚ**  
Teamwork with GAT S.L

Location: Vilanova i la Geltrú, Barcelona.  
Category: Building.



**2008 DESIGN OF A MUSIC SCHOOL WITH PREFABRICATED PANELS**  
Teamwork with GAT S.L

Location: Without defined location.  
Category: Public building.

**2008 NEW OFFICE BUILDING FOR SYNTESHIA COMPANY**

Teamwork with Puigverd Arquitectura S.L.

Location: Castellbisbal  
Category: Office building.  
Phase: Constructive design.



**2008 36 YOUNG RENT APARTMENTS BUILDING AND PARKING AT CALAF**

Teamwork with GAT S.L

Location: Calaf, Barcelona.  
Category: Building  
Finished work.

**2008 REFURBISHMENT OF THE "LICEU" SCHOOL AT PLAÇA URQUINAONA**

Teamwork with GAT S.L

Location: Barcelona.  
Category: Building refurbishment.  
Finished work.

**2008 DESIGN FOR THE ENLARGEMENT OF THE INFANTILE AND PRIMARY SCHOOL AT SANTA BÀRBARA**

Teamwork with Puigverd Arquitectura S.L.

Location: Sant Sadurn d'Anoia.  
Category: Public building  
Phase: Workmanship in execution.

**2008 COMPETITION FOR THE DESIGN OF AN INFANTILE AND PRIMARY SCHOOL AT MAS DE BARBERANS**

Teamwork with Puigverd Arquitectura S.L.

Category: Public building.



**2008 REFURBISHMENT OF THE OFFICES OF DELTALAB COMPANY**

Teamwork with Connecta R.B.P.

Location: Rubí, Barcelona.  
Category: Interior refurbishment.  
Finished work.

**2008 RESTRICTED COMPETITION FOR THE DESIGN OF THE 90 APARTMENTS BUILDING FOR OLD PEOPLE, NEIGHBOURHOOD CENTER AND PRIMARY ATTENTION CENTER AT BARCELONA**

Teamwork with FF&FF architecture office

Location: Barcelona.  
Category: Public building.

**2008 COMPETITION FOR THE NEW MARKET "ELS ENCANTS"**

Teamwork with FF&FF architecture office, and E.Batlle and J.Roig architects

Location: Barcelona  
Category: Public building.





**2008 APARTMENT REFURBISHMENT**

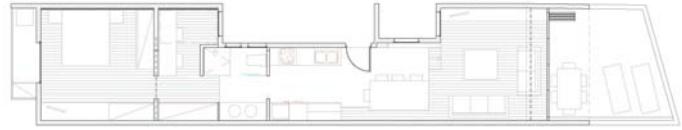
Location: c/ Vallseca 28, Barcelona.  
Category: Refurbishment.  
Finished work



**2008 REFURBISHMENT OF THE RESTAURANT CAL TRAVÉ**

Teamwork with Connecta R.B.P.

Location: Solivella, Tarragona.  
Category: Refurbishment.  
Finished work



**2008 NEW AQUARIUM IN THE PARK AQUALAND FÉRJUS**

Teamwork with Connecta R.B.P. and Jean Pascal Clement

Location: Fréjus. France.  
Category: Private leisure building.  
Phase: Stopped at the final design.



**008 REFURBISHMENT OF THE RESTAURANT "CAL TRAVÉ".**

Teamwork with Connecta R.B.P.

Location: Solivella.  
Category: Interior design and refurbishment.  
Finished work.

**2008 RESTRICTED COMPETITION FOR THE DESIGN OF A HIGH SCHOOL AT VACARISSES**

Teamwork with FF&FF architecture office, and C.Teixidor architect

Location: Vacarisses. Barcelona.  
Category: Public building.

**2008 TOWN PLANNING AND DESIGN OF THE CONSTITUTION SQUARE AND TWO LEVEL PARKING AT EL CARPIO**

Location: El Carpio, Córdoba.  
Category: Town planning and civil construction.  
Phase: Final design.



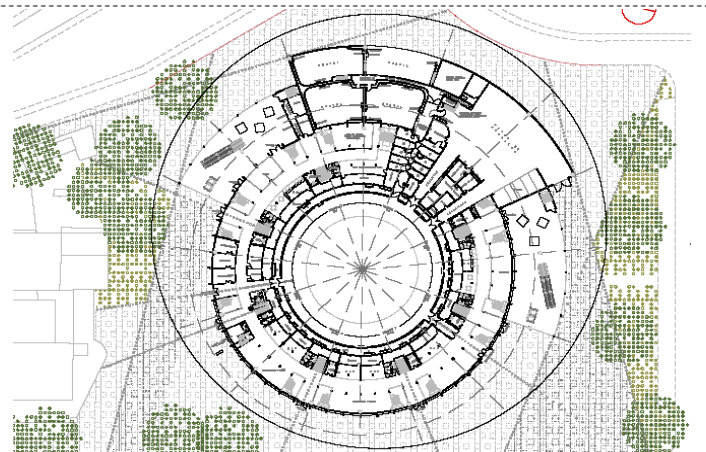
**2008 RESTRICTED COMPETITION FOR THE DESIGN OF A HIGH SCHOOL AT FRANQUESES**

Teamwork with FF&FF architecture office, and C.Teixidor architect

Location: Les Franqueses del Vallès, Barcelona.  
Category: Public building.

**2008 COMPETITION FOR THE COVERING AND REFURBISHMENT OF THE "PLAZA DE TOROS" AT PALENCIA**

Location: Palencia.  
Category: Public building.



**2008 COMPETITION FOR YOUNG ARCHITECTS "JAVIER MORALES". NEW PARISH CENTER.**

Location: Madrid.  
Category: Building.  
Selected design.



**2007 APARTMENT REFURBISHMENT**

Location: Av. Paral·lel, 2n3a Barcelona.  
Category: Refurbishment  
Finished work.

**2007 BUILDING REHABILITATION**

Location: av./ Paral·lel, Barcelona.  
Category: Rehabilitation.  
Finished work.

**2007 ENLARGEMENT AND REFURBISHMENT OF THE "ATENEU" AT SANT FOST DE CAMPSENTELLES**

Teamwork with GAT S.L

Location: Sant Fost de Campsentelles, Barcelona.  
Category: Enlargement and refurbishment.  
Finished work.

**2007 48 PUBLIC RENT APARTMENTS BUILDING, STORES AND PARKING AT LA COLÒNIA CASTELLS**

Teamwork with FF&FF architecture office

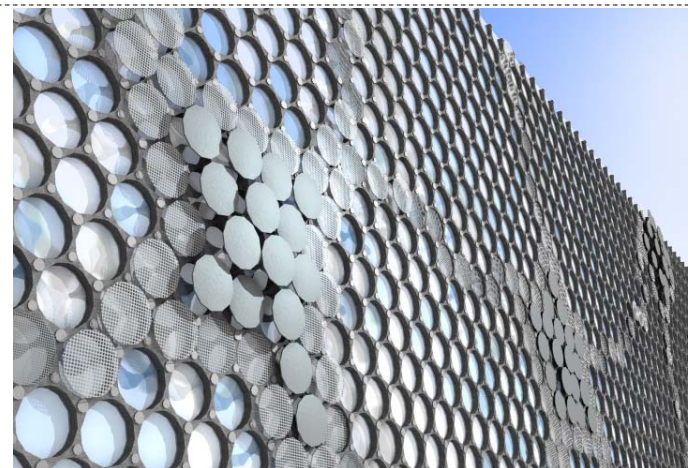
Location: Barcelona.  
Category: Public and commercial building.  
Phase: Constructive design.



**2007 COMPETITION FOR THE DESIGN OF THE PAVILION OF SPAIN IN THE UNIVERSAL EXHIBITION IN SHANGHAI 2010**

Teamwork with FF&FF architecture office

Location: Shanghai, China.  
Category: Public building.



**2007 CONSULTING FOR THE PLANNING AMENDMENT OF THE TOWN CENTER AT LLIÇÀ D'AMUNT**

Teamwork with FF&FF architecture office

Location: Lliçà D'Amunt, Barcelona.  
Category: Town planning and urbanism.

**2007 RESTRICTED COMPETITION FOR THE ENLARGEMENT OF THE UNIVERSITY CAMPUS OF BELLVITGE**

Teamwork with FF&FF architecture office, and C. Teixidor architect

Location: Barcelona.  
Category: Public building.

**2007 RESTRICTED COMPETITION FOR THE ENLARGEMENT OF THE FINE ARTS UNIVERSITY IN BARCELONA**

Teamwork with FF&FF architecture office, and C. Teixidor architect

Location: Barcelona.  
Category: Public building.



**2007 COMPETITION FOR THE NEW LIBRARY IN A PROTECTED BUILDING AT SANT POL DE MAR**

Teamwork with FF&FF architecture office

Location: Sant Pol de Mar, Barcelona.  
Category: Public building.

**2007 COMPETITION FOR THE DESIGN OF THE NEW HEADQUARTERS " LA CAMBRA DE COMERÇ DE BARCELONA "**  
Teamwork with FF&FF architecture office, A. Ravalli and Ove Arup architects

Location: Barcelona.  
Category: Offices building.

**2007 REFURBISHMENT OF THE "PLAÇA DE LA CONSTITUCIÓ", LLEIDA**  
Teamwork with FF&FF architecture office

Location: Lleida.  
Category: Urbanization.  
Phase: Constructive design.

**2006 DETACHED SINGLE-FAMILY HOUSING**

Location: Vilamòs, Lleida  
Category: Construction Management.  
Finished work.

**2006 SINGLE-FAMILY HOUSE**

Location: Vilamòs, Lleida  
Category: Interior design.  
Finished work.

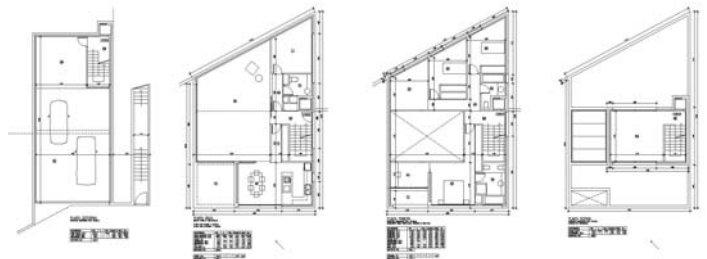
**2006 APARTMENT REFURBISHMENT**

Location: c/ Verntallat, Barcelona.  
Category: Refurbishment.



**2006 DETACHED HOUSE AT SANT BARTOMEU DE LA QUADRA**

Location: St. Bartomeu de la Quadra, Molins de Rei.  
Category: Building.  
Phase: Constructive design.



**2006 24 APARTMENTS BUILDING, STORES AND PARKING AT SANTA COLOMA**  
Teamwork with GAT S.L

Location: Santa Coloma de Gramanet  
Category: Building  
Finished work.

**2006 CONSULTING FOR THE PLANNING DESIGN OF THE AREA EX STAVECO**  
Teamwork with FF&FF architecture office

Location: Bologna, Italia.  
Category: Town planning and urbanism.



**2007 INITIAL, FINAL AND CONSTRUCTIVE DESIGN FOR THE "PARQUE METROPOLITANO DEL AGUA". ZARAGOZA EXPO 2008**  
Teamwork with AldayJover arquitectes

Location: Zaragoza Expo 2008.  
Category: Planning and urbanism.  
Finished work.





**2005 CONSTRUCTIVE DEIGN OF THE MENTALLY HANDICAPPED RESIDENCE AND DAY CENTER**

Teamwork with AldayJover arquitectes

Location: Gran Via, Barcelona.  
Category: Public building.

**2004 CONSULTING AND PLANNING OF THE DESIGN BASES AND MANAGEMENT FOR THE CONSTRUCTION OF NEW SUSTAINABLE INDUSTRIAL SITES** Team work with University of Catalunya and IDI Development institute of Balears

Location: Santa Eugènia, Mallorca.  
Category: Planning and urbanism.

**2004 WATER PARK AGBAR COMPANY**  
Teamwork with Gam S.L.

Location: Cornellà, Barcelona.  
Category: Landscaping and building.



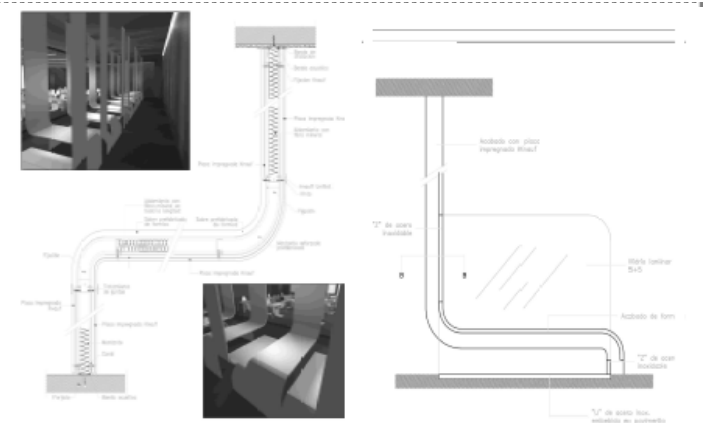
**2004 MANAGEMENT FOR THE CONSTRUCTION OF A INDUSTRIAL WAREHOUSE, LOGISTIC CENTER AND OFFICE BUILDING AT AL POLÍGON PEDROSA**  
Teamwork with Gam S.L. and A.G.M.

Location: L'Hospitalet de Llobregat, Barcelona  
Category: Commercial and offices building.  
Finished work.



**2004 COMPETITION KNAUF SOLUTIONS FOR ARCHITECTURE STUDENTS**

Category: Interior design.  
First prize.



**2004 - 2002 COMPETITIONS, INITIAL BUILDINGS DESIGNS, CONSTRUCTING BUILDING DEIGNS, DETACHED HOUSES DESIGNS STORES AND PUBLIC BUILDINGS REFURBISHMENTS,**  
Teamwork with Gam S.L.